

Great Lakes Pastel Society
2019 Members Exhibit
June 21 – Sept. 7, 2019
www.glps.org

Carnegie Center for the Arts

107 N. Main St.
Three Rivers, MI 49093
Phone: 269-273-8882
Hours: Tues-Fri: 10-5:00, Sat: 9-noon (ET)
www.trcarnegie.com

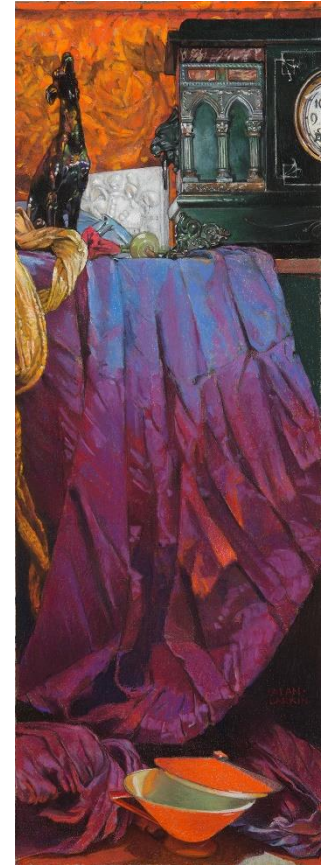
Schedule of Events:

- **Entry deadline: Mar. 31, 2019 at www.showssubmit.com**
- Notifications emailed by late April
- Accepted shipped work to arrive by May 31
- Accepted hand delivery: May 28 – June 1 during normal business hours
- **Awards Reception: Fri, June 21, 5:30-7:30 pm (ET)**
- Pick up of accepted work: Sept. 10 - 14 during normal business hours

Juror: Alan Larkin, www.alanlarkin.net

Alan Larkin works primarily in oil and pastel but is also known for his etchings and lithographs. He is passionate about drawing from life, having taught observational drawing for many years at Indiana University South Bend where he also ran the printmaking program. He continues to teach workshops in drawing.

He has won many prizes in regional, national and international competitions for his artwork, including Best Still Life in the 2018 Fall International Online Exhibition sponsored by the National Oil and Acrylic Painters' Society, the prestigious Founder's Award in the 2016 Pastel 100 Competition sponsored by *Pastel Journal* magazine, and Best of Show Award at the 75th and 91st Annual Hoosier Salon Exhibition in Indianapolis. His works are in numerous private collections including the corporate collections of Pillsbury, NIPSCO, and Lincoln Life Insurance Companies. His work may be seen on the web at www.alanlarkin.net.



ENTRIES ARE OFFICIALLY BEING TAKEN AT www.showssubmit.com

Eligibility: Open to any pastel artist 18 years and older. Work done under supervision in a class or workshop is NOT ELIGIBLE. Painting must be at least 80% soft or oil pastels. Painting must be identical to the accepted image. No copies from other artists or pre-published material. Artwork restrictions: **no larger than 5 ft. wide including frame.** Work must have been **completed in the last two years** and not have been shown in any previous GLPS exhibit. Nude artwork will be accepted, but the GLPS and the Carnegie Center for the Arts reserve the right to exclude any artwork deemed offensive or against US laws.

Entry fee: Up to 5 image entries per artist. Entry fee for 1st image is \$35. For images 2-5, \$5 each. Entry fee is nonrefundable and must be paid at time of entry online. **GLPS 2019 member dues must be paid BY Jan. 31 to enter this show. No exceptions.**

Digital Image Format: All entries must be digital and submitted online to www.showssubmit.com. Digital images should be in JPG (jpg) format with a resolution of 300 dpi with 900 pixels on the longest side. JPG must show precise image of the artwork only (no mat, frame, or easel). Additional guidance for image preparation may be found at <http://www.showssubmit.com/photoprep.htm>.

File Name Instructions: DO THIS BEFORE ENTERING THE SHOW! Start with your last name, an underscore, then your first initial, then another underscore, then type the title of your painting WITHOUT ANY SPACES, SPECIAL CHARACTERS, OR PUNCTUATION MARKS. Shorten long painting titles. Be sure the file name ends with .jpg
Example: Artist: Rachel Carson, Artwork title: The Tide Pool's Reflection
File name: Carson_R_TheTidePoolsReflection.jpg

All artists will receive notification by email after jurying is complete. Please add office@showsubmit.com to your safe senders list to ensure notifications are received.

Online Entry: When entering online with Show Submit for the first time, follow the instructions for opening an account, and create a unique password just for this show. Record your password because you will reuse it to add, change, or edit entries for this show. Then scroll down to find the **Great Lakes Pastel Society 2019 Members Exhibit**, and follow the directions for entry. When filling out your artwork information for this show, please be sure all information is correct – spelling, title, pricing of artwork. All information is input by the artist and is used AS IS by GLPS for reference, printed material, and online postings. No changes can be made after the entry **deadline, Mar. 31**. At the end of your entry process, payment can be made using PayPal or a valid credit card. All entries must be **paid for by the entry deadline** or your entry process is not complete. **Once you pay, you cannot make any further changes to your entries.**

If you need help with the online entry system, please contact Joe Baker at jbaker@showsubmit.com.

Framing & Presentation: Accepted works must be delivered framed and ready to hang. Frames must use wire for hanging.

Sales & Exhibit Rules: All work **MUST BE** for sale at a 40% commission. No work will be released before the close of the exhibit.

NEW RULE: If an accepted artist breaks the exhibit rules stated in this prospectus in any way, they will be **banned from participating in future GLPS exhibits for 5 years. This includes non-delivery of accepted artwork and picking up artwork before the final exhibit date.**

Delivery & Pickup of Shipped Work: If accepted, shipped work **MUST INCLUDE** a prepaid return shipping label. Hand delivery and pickup dates/times are noted above. **If someone other than the artist is picking up artwork, permission must be given to other party IN WRITING.** The Carnegie Center has limited storage space for shipping materials and prefers that members look into carpooling their **hand delivered artwork.**

ADDITIONAL RULES:

- **If shipping artwork, NO PACKING PEANUTS ALLOWED. NO WORK PACKED WITH PEANUTS WILL BE HUNG IN THE SHOW.**
- **If two works are shipped together they must be individually boxed inside the main container.**
- **Shipping boxes and all interior boxes must be labeled with artist's name.**
- **For work hand delivered, ALL bubble wrap, plastic bags, etc. must leave with the artist.**

Liability: The utmost care will be taken in the handling of paintings. However, neither the Great Lakes Pastel Society nor the Carnegie Center for the Arts will be responsible for loss or damage to any paintings submitted for the exhibition.

Questions? Email Mary Ann Pals at maryann.pals@gmail.com. If you have not paid your 2019 GLPS member dues, please contact our membership chair, Terre Ritchie, terrekritchiefineart@gmail.com. **YOU MUST PAY YOUR DUES BY JAN. 31 AND RECEIVE PAYMENT CONFIRMATION BEFORE ENTERING THIS SHOW.**

For GLPS membership inquiries, follow this link: <http://greatlakespastelsociety.org/join-renew>